



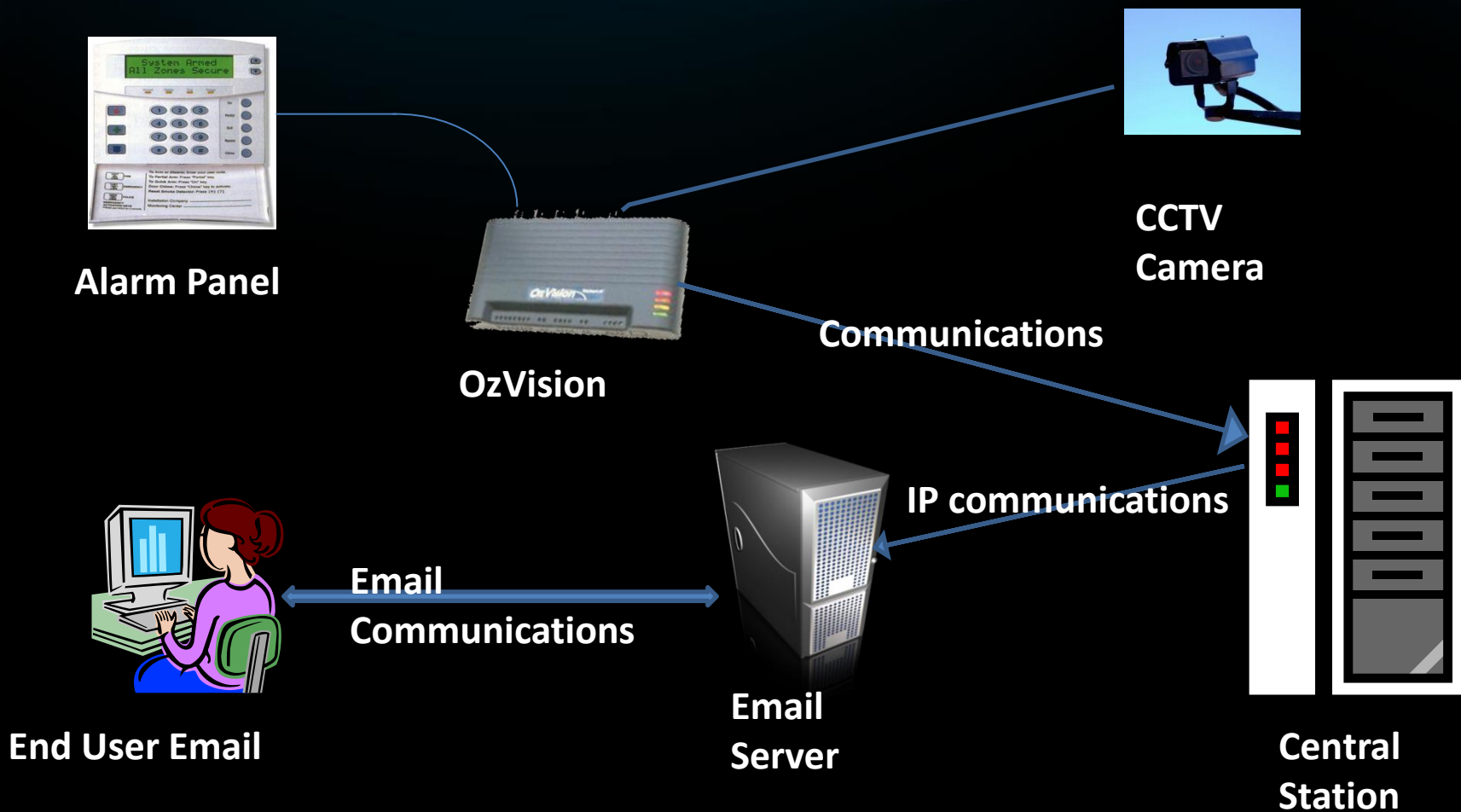
A vision of the Future

Increase Your Recurring Revenue from Video Services

## The Vision

- To bridge the CCTV and alarm monitoring industries in order to open up new services that will generate additional sources of recurring revenue from remote video.
- To make remote video services an integral part of security monitoring and every day life.

# How OzVision Works



# Services

## ***Verification***

- Central stations receive pre and post video alarms allowing monitoring operators to prioritize and verify alarms, significantly minimizing costly false alarm fines.

## ***Notification***

- OzMail opens up new video monitoring services by automatically sending video clips of alarm events such as video open/close reports, video inventory reports and scheduled video tours to your customers' email. Anywhere, anytime - even to your mobile POCKET PC device.

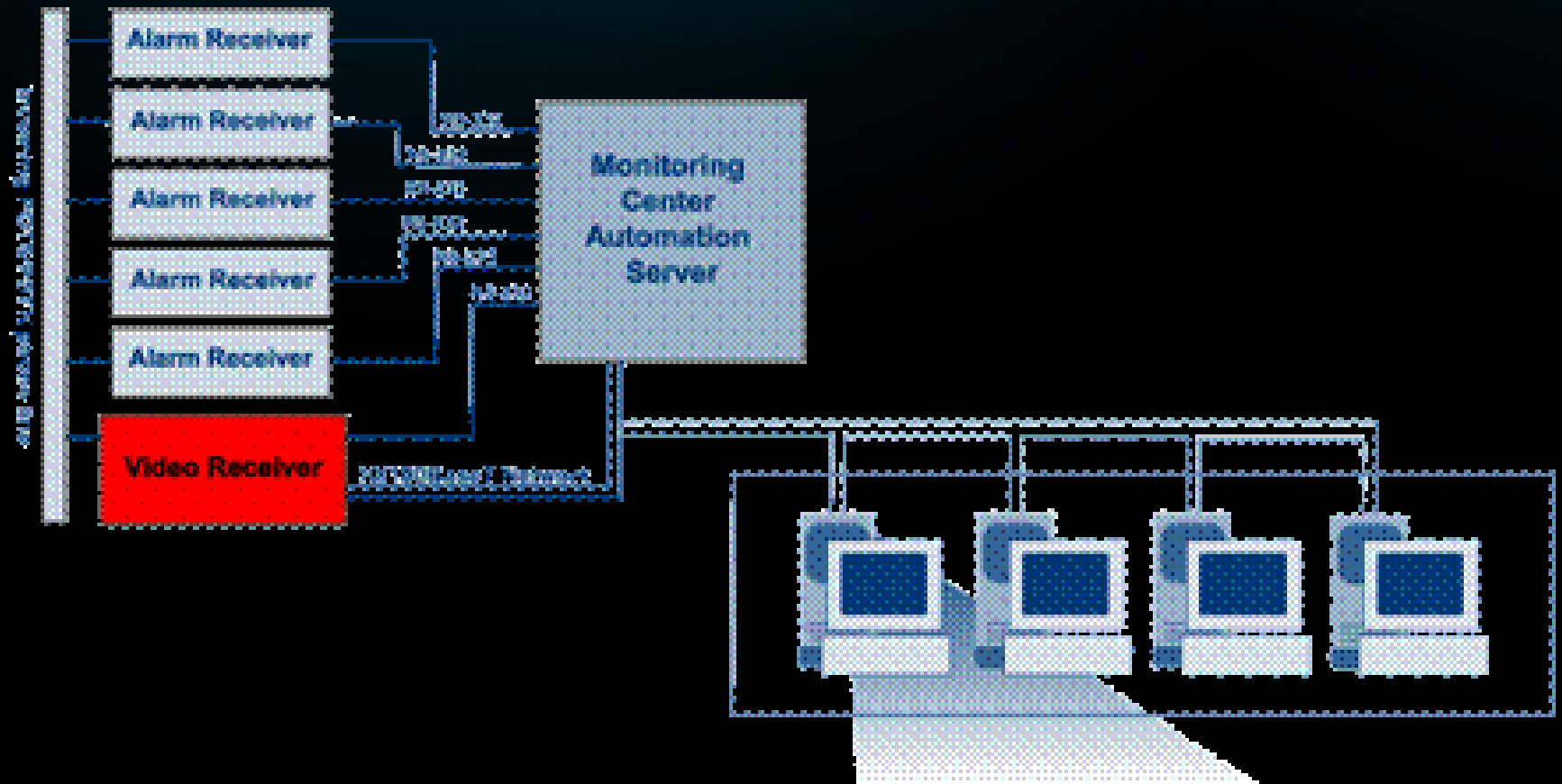
## ***Exploration***

- Your customers may view live video of their homes or businesses remotely over standard telephone lines... selecting cameras, viewing times and even controlling external devices such as lights.

## OzVision Compatible

- Under the OzVision Compatible program, major security manufacturers have private labeled OzVision's technology.
- rvm4c
- OzLine 12CS
- VVM110

# At the Central Station





# SIMS Signal Flow

1 Picture

# Operator Event Handling

- Receiving pre and post alarm video on the traffic display will enable the dispatcher to receive the necessary information for prioritizing and verifying the alarm...



Pop Up Video Window



## Video Verification

- As more and more cities require some type of verification before responding to an alarm, visual verification provides the perfect solution. Previously, monitoring stations were literally blind to alarm events

– *...now we can know if it was a cat or a cat burglar!*

## What is Video Verification?

- **Prioritizing actual alarms**
- **Verifying alarms immediately**
- **Pre and post video alarms**
- **Extra information attached to the digital alarm**
- **Minimum operator time and limited liability**
- **Not identification, surveillance or live video**

## **Email Notification**

*Customers receive immediate and automatic notification of any event – right to their email.  
Another source of RMR!*

- **High quality, compressed video clip pops up in the customer's e-mail program.**
- **Standard e-mail sent to a computer or mobile or even to a PDA**

## Open/Close Video Reports

- Manage late night deliveries
- Cleaning crew activity
- Video time cards

*More than just a simple paper opening or closing report for customers, video shows them:*

- Who it was and whether anyone was with them.
- If they carried anything away!

## Video Tours & Virtual Visits

- Automatic scheduled Video Tours will be displayed and viewed on the traffic display... or sent to a subscriber's email
- ...using minimum operator time
- *Reduce or even eliminate a customer's need for onsite guard services.*

## Exploration

- *End users can monitor their business remotely for any reason and as many times as they need to each day.*

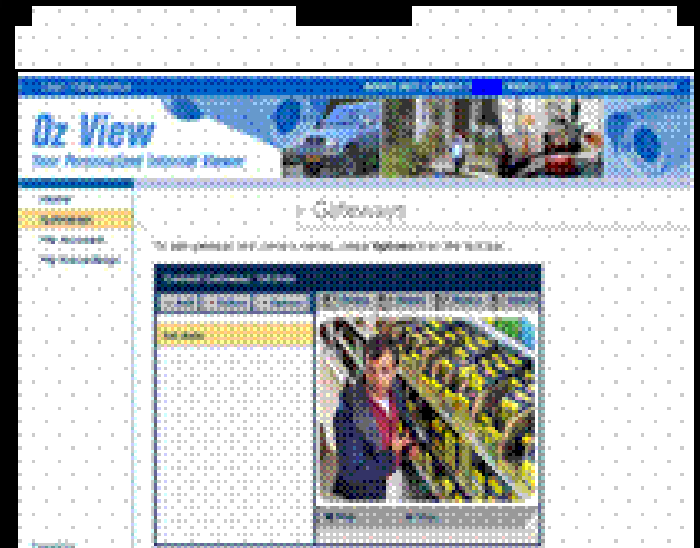


## **IVS: Internet video server**

- A real plug and play video IP products line
- Easy viewing by the click of a mouse
- Highly secured encrypted transmission

## IVS: Internet video server

- Fully featured Video Application Servers
  - Virtual Digital Video Recording
  - Web casting
  - Video streaming to any computer or wireless device
  - Automatic notification
  - Billing server



# Functional Description

## Local



Internet Video Gateway



Accessories

## Service Provider



Internet Video Server

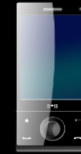


Application Servers

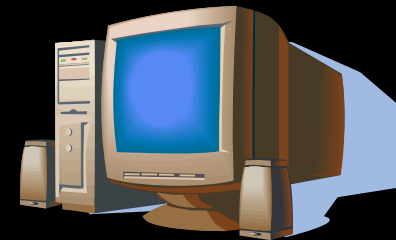
## Viewer UI



PC Viewer

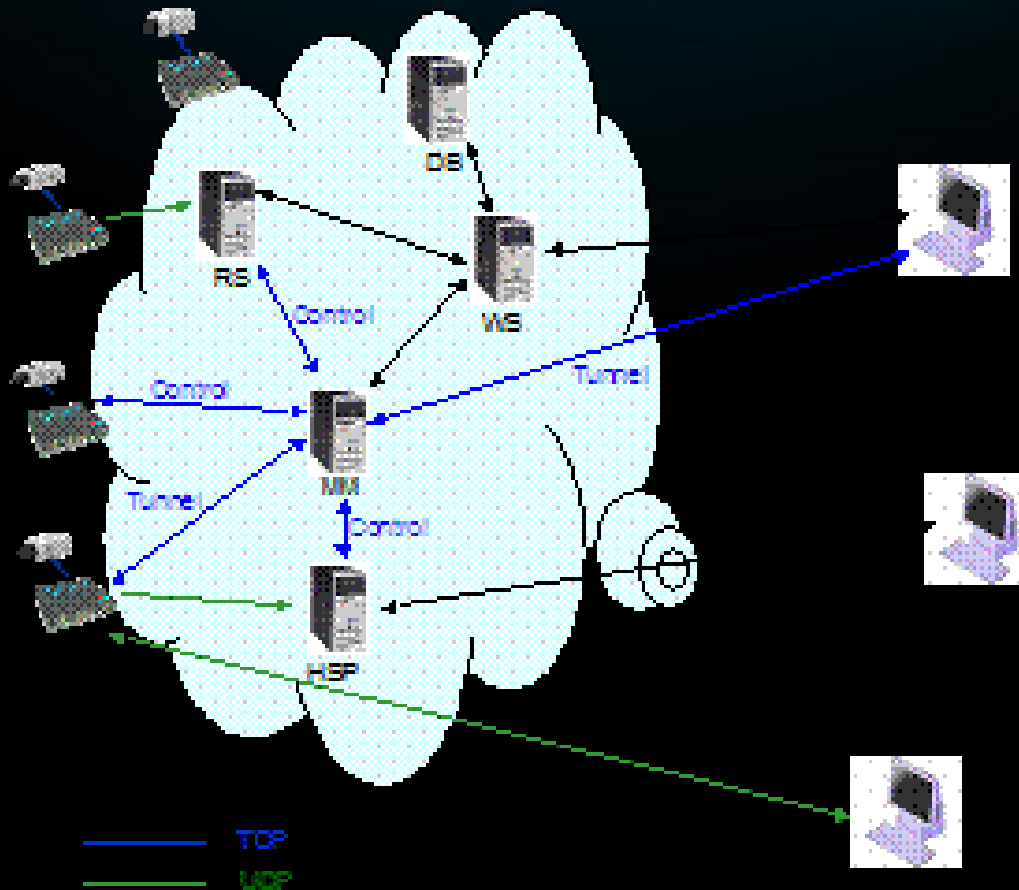


Mobile Viewer



Monitoring Stations GVI

# Internet Server Structure



MM- Middleman Server

HSP – Media Streaming Server

WS- Web Server

RS – Remote Storage Server

DB – Subscriber Database

## The New OzLine LS

- The Quad Camera View improves the central stations ability to verify alarms and other events.
- •Intelligent Video Processing enables instant prioritizing of incoming alarms, allowing the operator to quickly see what is happening at the premise.
- •Triple redundancy includes dial-up, Internet and cellular connections.
- •With the Built-in Battery Backup the unit will continue to stream video and alarms and record during a power outage for at least another half-hour.
- •ME-JPEG II



## HomeLine

- **Making remote video services an integral part of every day life demands a solution for the residential market. HomeLine is a basic low cost unit for two cameras and one alarm input.**
- **HomeLine is equipped with a feature-connector for expansion units such as: activation outputs, additional alarm inputs and climate control.**



Thank You!

Questions and Answers

[www.ozvision.com](http://www.ozvision.com)

800-385-2317

781-932-6900