



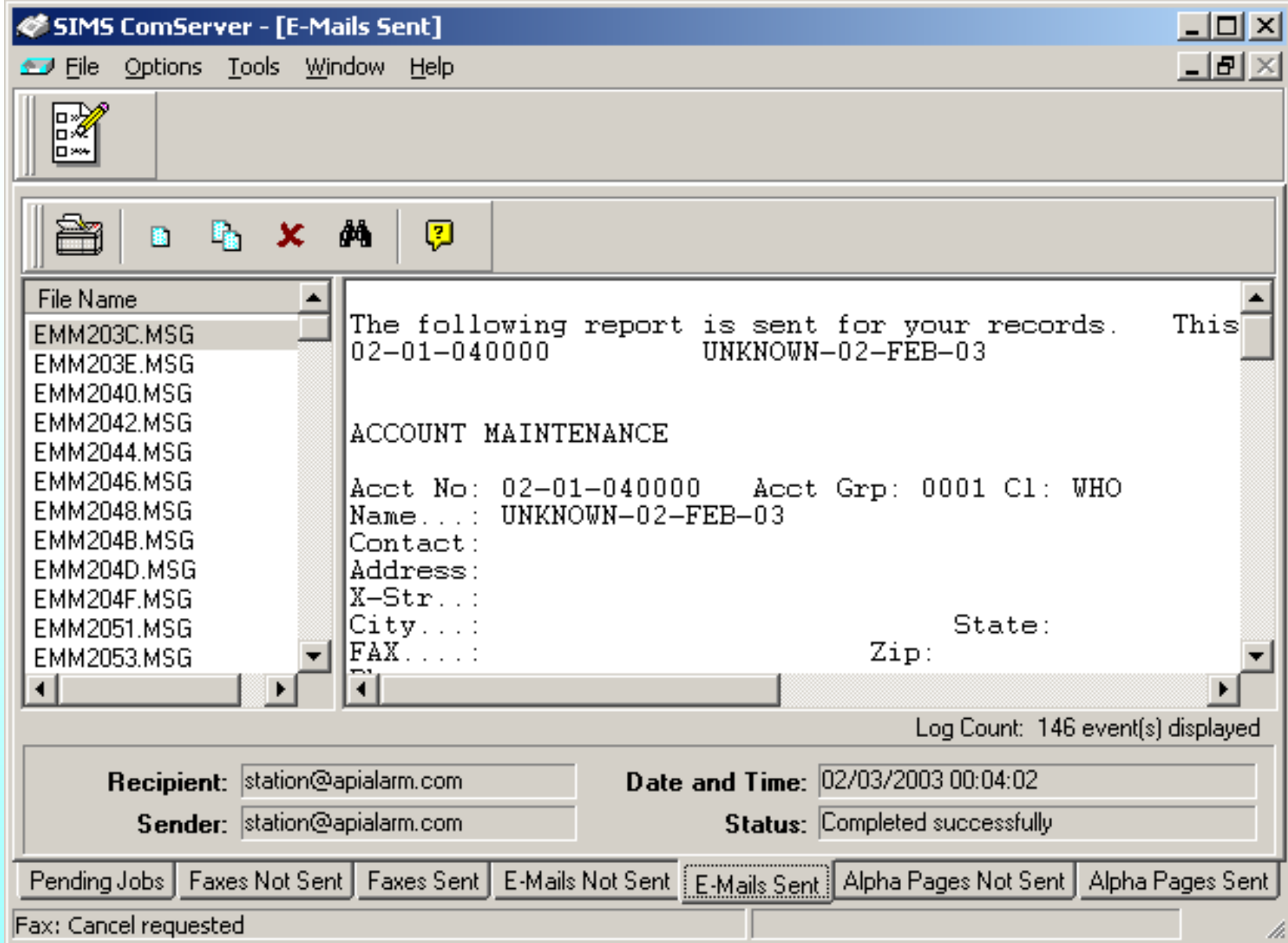
**ComServer**

# “SIMS Communication Program”

By Kenneth Utley  
SIMS 2002 User Conference

# *What is SIMS ComServer ?*

- **A program that allows you to fax, e-mail, and send alpha numeric pages from SIMS II and SIMS for Windows. It also has limited functionality with CSM.**
- **Confirmation of these message will be displayed on the SIMS traffic display and also be written to history for later retrieval.**




**The ComServer program allows you to view pending jobs, and the status of Fax, Email and Pager messages.**

**Setup Properties** [?] [X]

Fax Device | Log | Event Deletion

Program | E-Mail | History | Fax Header


 Specify the information you want to use to identify yourself on outgoing faxes and directories used by this program.

General:

Name:

Company:

Station identifier (CSID):


Cover file:  


Dial prefix:

Dial attempts:       Retry wait:

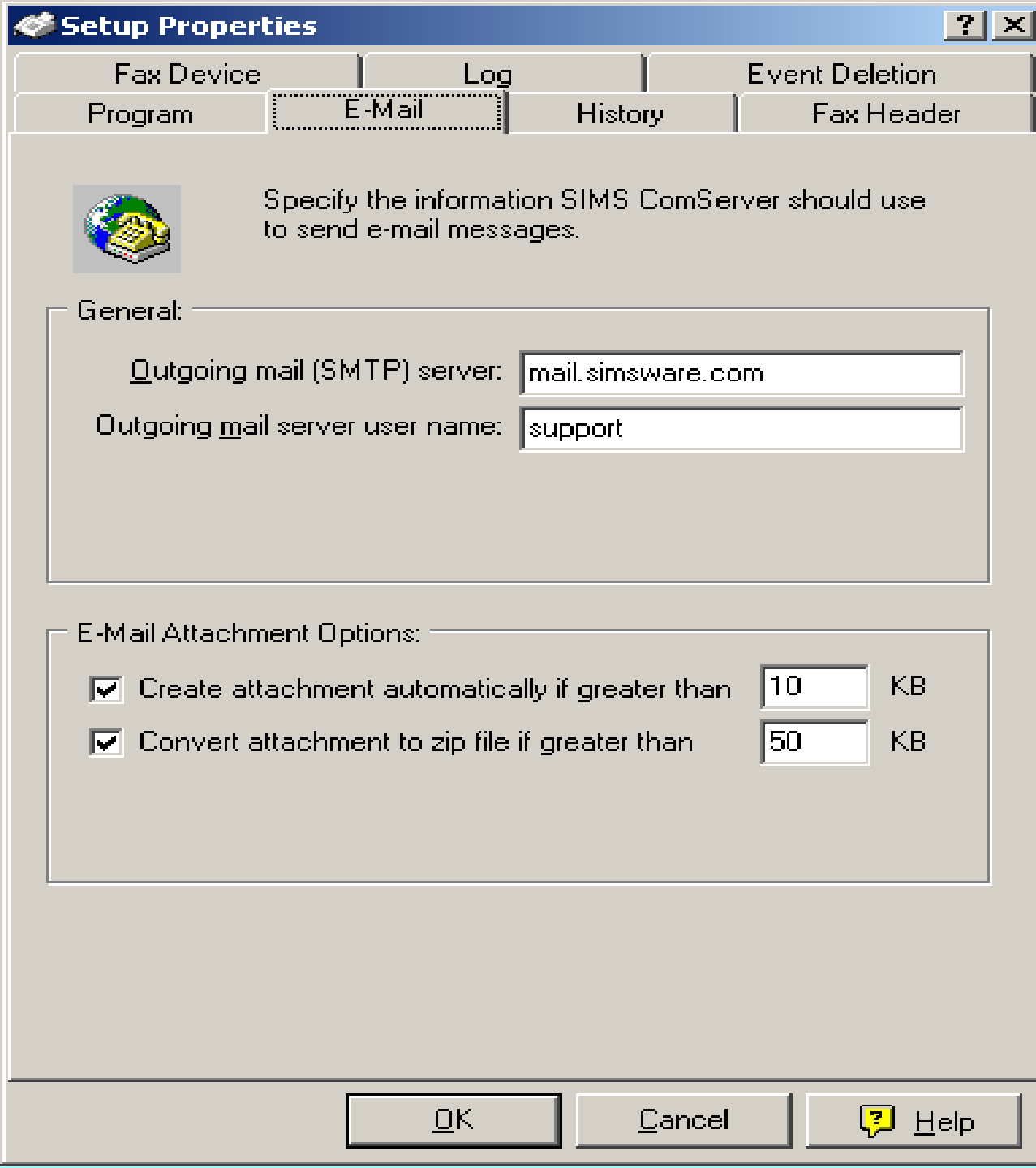
Disable alpha paging

CSM compatible queue data directory

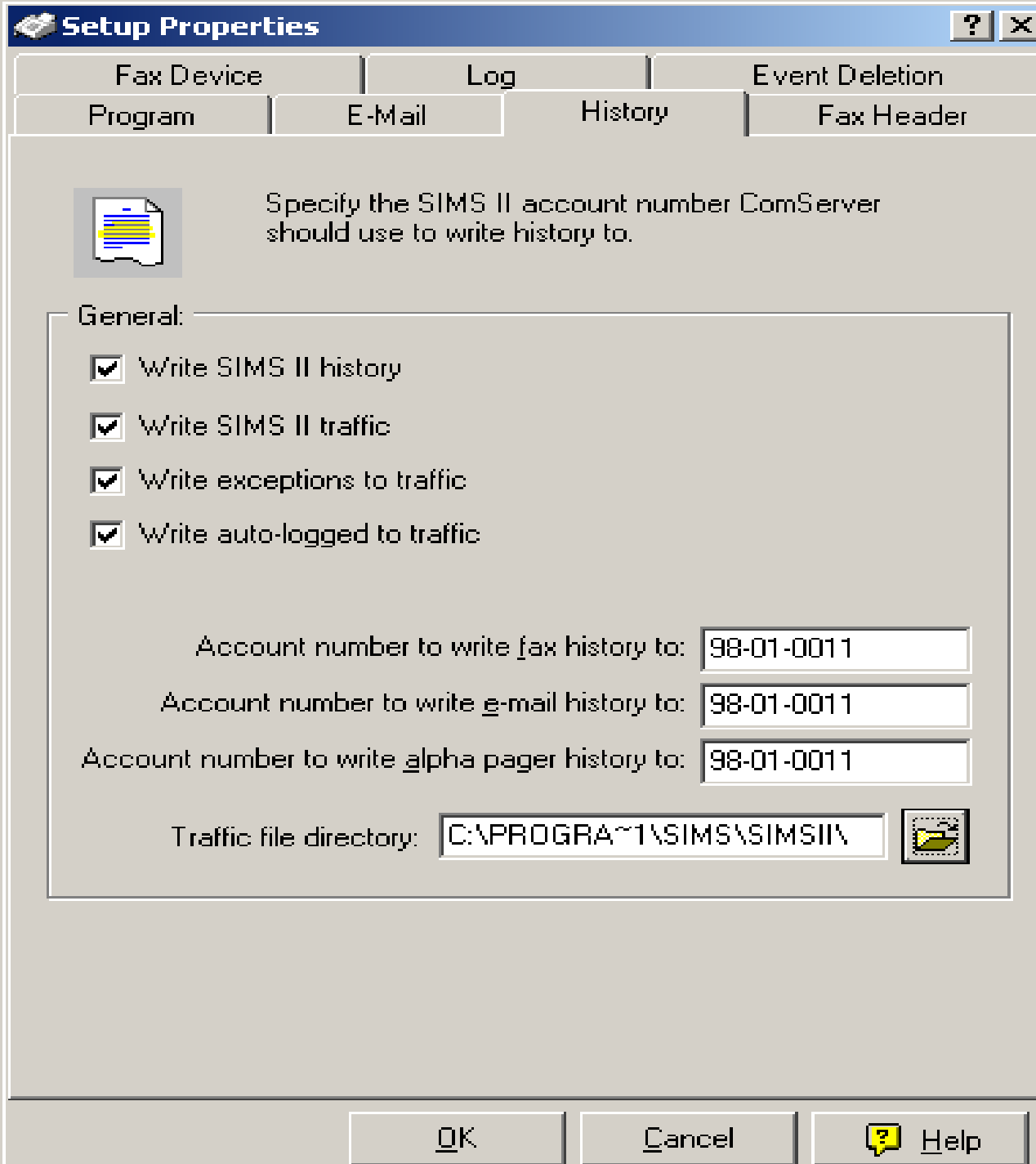
Queue data directory:  

        Help

**All ComServer options are set within the Setup Properties dialog box.**



**SIMS ComServer allows you to specify SMTP server options to allow SIMS ComServer to send e-mail messages.**



**SIMS ComServer allows you to specify an account for logging both the fax and e-mail status of messages to history and traffic display.**

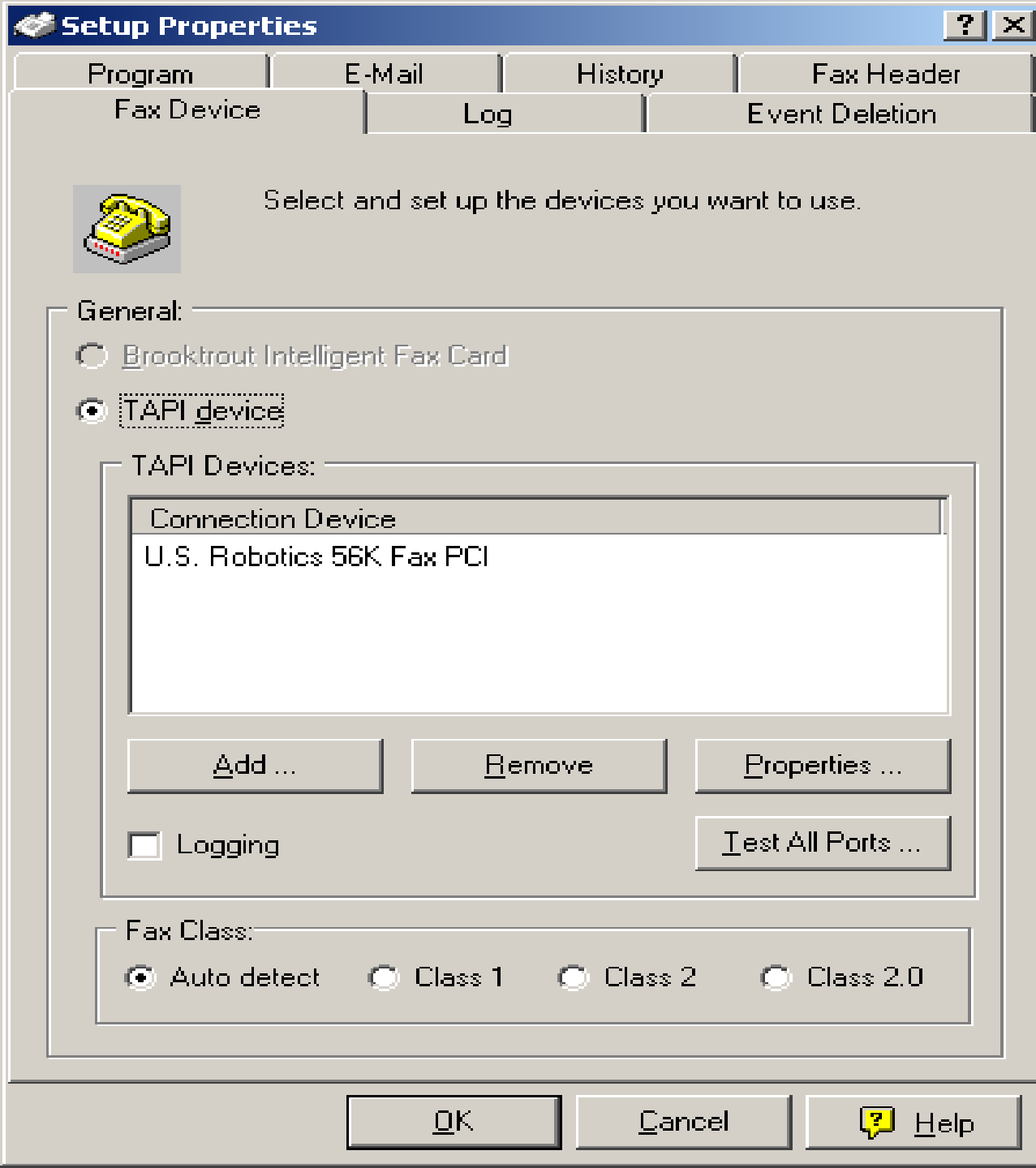


Specify the information you want to display in the header on outgoing faxes.

Header information:

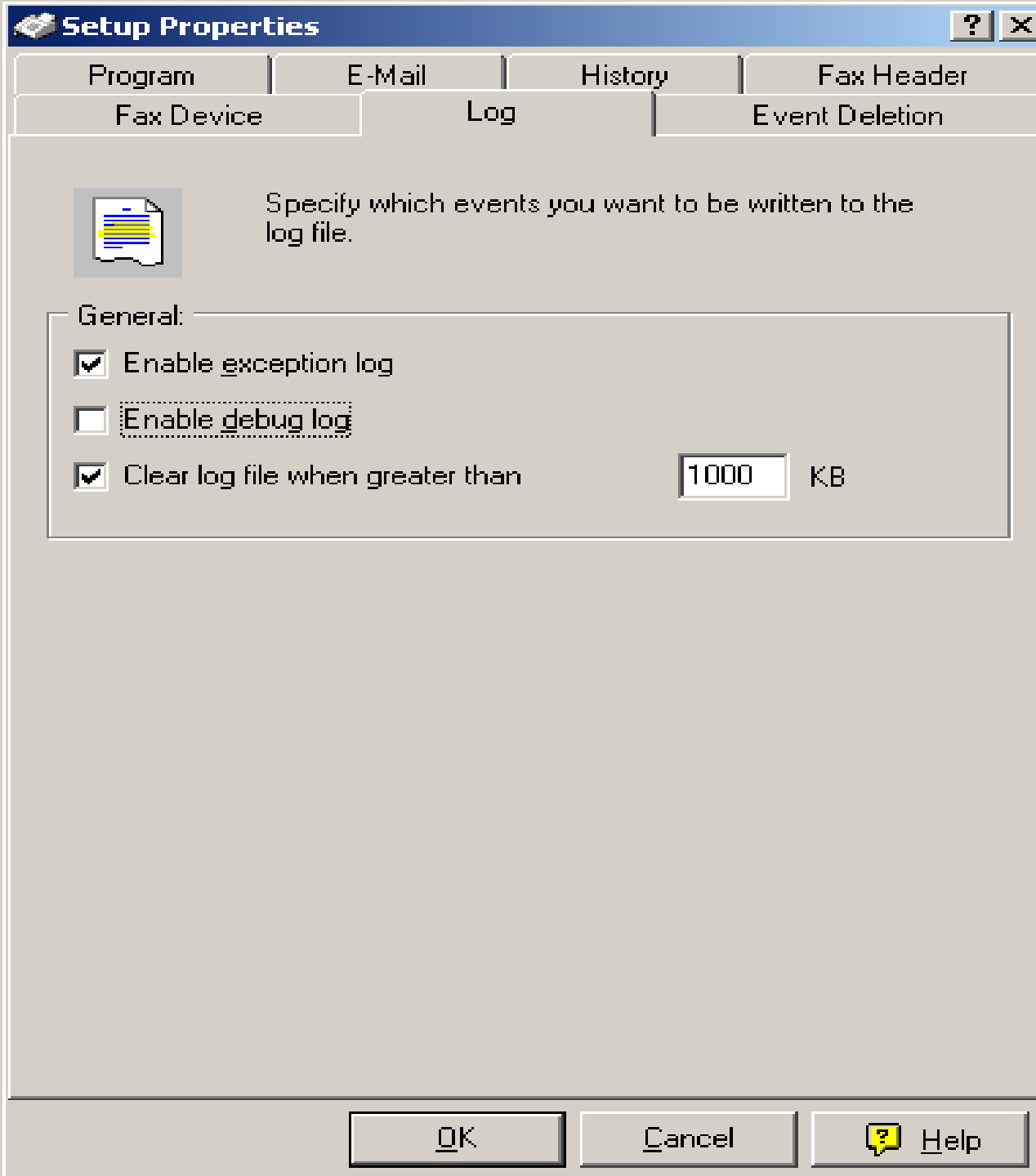
Left:

**SIMS ComServer allows you to customize the header line that appears on all faxes sent from SIMS ComServer.**



**SIMS ComSever** allows you to specify which TAPI ports should be used to send faxes and alpha numeric pages.





**SIMS ComServer allows you to specify what type of information will be written to the log file.**



Specify how you want to manage and delete events

Fax:

- Delete events automatically after  day(s)
  - All events
  - Failed events
  - Completed events

E-Mail:

- Delete events automatically after  day(s)
  - All events
  - Failed events
  - Completed events

Alpha Pager:

- Delete events automatically after  day(s)
  - All events
  - Failed events
  - Completed events

**ComServer can automatically delete the record of it's events to save disk space.**

*Questions ?*